

Install Instructions on  
Page 6, 7 & 8

# Albatross System

## Overview

The **Albatross** Ceiling Security and Disaster Readiness, and Energy Saving System, provides a convenient way to add your choice of smart devices, freeing up space on counter tops, walls, and tables. Eliminating power and USB cords that are eyesores to guests, that hang down walls, or spread across tables, and countertops. **The bathroom unit, allowing homes in California to greatly reduce shower water usage.**

The **Albatross System** is comprised of a Donut with multiple Modules. All modules have constant power because the ceiling light is now turned on and off wirelessly. Future modules will come in various shapes and sizes.

**Below are some of the items that can be installed inside, or mounted outside using Mounting Arms:**

- Camera - view an entire room with overhead cameras (security, nanny cam, baby monitor)
- Speaker - fill the room with stereo or surround sound from your smartphone, TV or computer
- Microphone - combine a microphone with speakers for 2-way communication (intercom, phone)
- Laser Lights – brighten up your home with multi-colored lights (mood, flashing)
- Ceiling Projector – project pictures, videos, television on a nearby wall
- Detectors – trigger alerts based on motion, smoke and carbon monoxide
- DC Auto-Sense Backup Lighting System – Keeping families safe during; wildfires, floods, hurricanes, tornadoes, or other events caused by Global Warming
- AC Sockets – use to power external ceiling devices (holiday lights, speakers)
- Ceiling Fans that can be aimed down at kitchen stoves, beds, providing a downward breeze while sleeping, watching TV, etc.. This saving energy costs by reducing the use of air conditioning.
- In kitchens create a two fan directing air system, pushing air from stoves, like a bending river, out windows. A two fan system home wide, will reduce the need for air conditioning, saving energy.

### Typical Albatross System

“Keep your existing light”, if it is less than an 11 inch oval.



Mounting  
Arms Top  
Bottom

# Albatross System

## Baseline Parts

(Your existing light does not need to be replaced if its base is less than 13 inches.)

Item	Project Part Name	Description	Buy QTY	Suggested Product Link with Picture	Approx Price
1	Donut	Round Plastic Shell, that internally holds electrical/USB Cables, and wireless light switch. Modules store excessive power and USB cords inside. Only 3 inches of cable extrude. Unit come finished in Grey or Black. Comes with basic electrical wires installed.  Donut is 3D printed using PETG filament. Print time for one unit is 6 days. Intended for customers to change color and paint to match existing light. OK as-is however.	1	<a href="https://drive.google.com/file/d/1MTdWYcQybW4tvhwQPUEfuaEPe4r68uR/view?usp=sharing">https://drive.google.com/file/d/1MTdWYcQybW4tvhwQPUEfuaEPe4r68uR/view?usp=sharing</a>	\$275
2	External Mounting Arms	Mounting arms are included with the Donut. 16 hours of 3D printing time. Intended for customers to paint to match existing light/room.	4	<a href="https://drive.google.com/file/d/1RSXak8zNRg0t3dcTz_PV0HzbBJF0BAxl/view?usp=sharing">https://drive.google.com/file/d/1RSXak8zNRg0t3dcTz_PV0HzbBJF0BAxl/view?usp=sharing</a>	0
3	Electrical Box Extender Mounting System	Comes with the base that attaches to the ceiling electrical box and lid. 3D print time 2 days.	1	<a href="https://drive.google.com/file/d/1ozNKF2q2eOSQ2xrgtrZhJC2UjV47kcOC/view?usp=sharing">https://drive.google.com/file/d/1ozNKF2q2eOSQ2xrgtrZhJC2UjV47kcOC/view?usp=sharing</a>  <a href="https://drive.google.com/file/d/19YYnS8ENjg-z27zn0mu3tNL9seKGKFA/view?usp=sharing">https://drive.google.com/file/d/19YYnS8ENjg-z27zn0mu3tNL9seKGKFA/view?usp=sharing</a>	0
4	Base Paint	All unit are hand sanded and 3 layers of primer have been applied. Units are painted in Black or Grey with a primer/paint finish. Unit is prepared so color of choice can be applied by homes easily to match room and existing lights. However, units are ready to be installed as-is.			
5	USB 3.0 Keystone Jack Inserts, 5pcs USB to USB Adapters Female to Female	Donut shell comes with 4 USB 3.0 Jacks installed. They are not glued so they can be removed and the shell painted. Consider after painting and testing they work, they be glued in place. (Do not need to purchase) \$8.99	0	<a href="https://www.amazon.com/gp/product/B08ZN247XV/ref=ppx_yo_dt_b_asin_title_o05_s01?ie=UTF8&amp;psc=1">https://www.amazon.com/gp/product/B08ZN247XV/ref=ppx_yo_dt_b_asin_title_o05_s01?ie=UTF8&amp;psc=1</a>	0
6	USB Two Port Module Optional Module	The shell comes with each module having 1 USB port. A two port module is available. Complete shell can have up to 7 USB ports.			\$25
7	Custom Lettering Optional	If given as a gift, custom lettering can be ordered. Thus a child or family name can be added, or "Welcome", "Home is Love"etc...	1	<a href="https://drive.google.com/file/d/19TtSrJd7hRdT8GA4XaBT8tJw2noQP-6j/view?usp=sharing">https://drive.google.com/file/d/19TtSrJd7hRdT8GA4XaBT8tJw2noQP-6j/view?usp=sharing</a>	\$99
8	Bathroom Shower Water Recycling Module Optional	Bathroom version with this module is waterproof. It is installed on the closest light to the shower head. Module gets power safely to the ceiling just above shower head. Reducing shower water usage up to 50%.		<a href="https://drive.google.com/file/d/1N2unvn9GzRVtUr1k_WfUo-iD0yDlJkHU/view?usp=sharing">https://drive.google.com/file/d/1N2unvn9GzRVtUr1k_WfUo-iD0yDlJkHU/view?usp=sharing</a>	\$25

# Albatross System

Parts Required to Complete Project					
Item	Project Part Name	Description	Buy QTY	Suggested Product Link with Picture	Approx Price
1	6 Pack International Standard 1/4"-20 Male to 1/4"-20 Male Threaded Tripod Screw	Tripod screw to attach mounting arm to Donut Shell. Comes in a pack of 6. Four are needed.	1	<a href="https://www.amazon.com/gp/product/B079BNWB6K/ref=ppx_yo_dt_b_asin_title_o01_s00?ie=UTF8&amp;psc=1">https://www.amazon.com/gp/product/B079BNWB6K/ref=ppx_yo_dt_b_asin_title_o01_s00?ie=UTF8&amp;psc=1</a>	6.99
2	6Pcs Flexible Desk Hole Grommet	Rubber 1 inch cable management plug. Required for cable management. Keeps power or USB cables inside modules. Approximately only 3 inches seen on the outside.	1	<a href="https://www.amazon.com/gp/product/B092J77T98/ref=ppx_yo_dt_b_asin_title_o04_s00?ie=UTF8&amp;psc=1">https://www.amazon.com/gp/product/B092J77T98/ref=ppx_yo_dt_b_asin_title_o04_s00?ie=UTF8&amp;psc=1</a>	\$5.50
3	Teeda Wireless Light Switch Kit, Self-Powered Remote Light Switch, Battery-Free,	Wireless switch required so all Donut devices have constant power. <b>(Not required for bathroom water saving units.)</b>	1	<a href="https://www.amazon.com/gp/product/B08G8KFCDF/ref=ppx_yo_dt_b_asin_title_o05_s00?ie=UTF8&amp;psc=1">https://www.amazon.com/gp/product/B08G8KFCDF/ref=ppx_yo_dt_b_asin_title_o05_s00?ie=UTF8&amp;psc=1</a>	\$19.99
4 (4 or 5 is required)	USB Splitter, ANDTOBO USB 2.0 Y Splitter Charger Cable 1 Male to 4 Female Power Cord	Used to split USB power 4 ways to each USB outlet inside of modules. This can be used with any single port USB charger. Recommended if all USB devices do not require more than 5 Volts. The tails can directly connect to USB ports. An adapter is required and link is provided.	1	<a href="https://www.amazon.com/gp/product/B07VLJDQ15/ref=ppx_yo_dt_b_asin_title_o05_s00?ie=UTF8&amp;psc=1">https://www.amazon.com/gp/product/B07VLJDQ15/ref=ppx_yo_dt_b_asin_title_o05_s00?ie=UTF8&amp;psc=1</a>  <a href="https://www.amazon.com/Electop-Changer-Adapter-Coupler-Converter/dp/B015OMSQWM">https://www.amazon.com/Electop-Changer-Adapter-Coupler-Converter/dp/B015OMSQWM</a>	10.99
5 (4 or 5 is required)	Fast Charge 3.0, Portable USB Wall Charger, iSeekerKit 4Ports USB Wall Charger Adapter	This 4 port USB charger solution is required for devices that require 10 volt USB power. The 10V Amazon Echo Dot to be powered via USB this solution is required. Below adapter required as well. Converts 5 volts to 10. <a href="https://www.amazon.com/gp/product/B07M8Z9TYR/ref=ppx_yo_dt_b_search_asin_title?ie=UTF8&amp;psc=1">https://www.amazon.com/gp/product/B07M8Z9TYR/ref=ppx_yo_dt_b_search_asin_title?ie=UTF8&amp;psc=1</a> <b>If this solution is chosen, 4 short USB cables are required. USB 3.0 A to A Male Cable 1Ft,USB to USB Cable USB Male to Male</b>		<a href="https://www.amazon.com/Portable-Charger-iSeekerKit-Compatible-Wireless/dp/B082SNBJBL/ref=asc_df_B082SNBJBL/?tag=linkC&amp;ode=df0&amp;hvadid=416804729915&amp;hvpos=&amp;hvnetw=g&amp;hvrnd=9788360147060733018&amp;hvpone=&amp;hvptwo=&amp;hvqmt=&amp;hvdvc=c&amp;hvdvcmld=&amp;hvllocint=&amp;hvllocphy=1027744&amp;hvtargid=pla-909584486330&amp;ref=&amp;adgrpid=96943124074&amp;th=1">https://www.amazon.com/Portable-Charger-iSeekerKit-Compatible-Wireless/dp/B082SNBJBL/ref=asc_df_B082SNBJBL/?tag=linkC&amp;ode=df0&amp;hvadid=416804729915&amp;hvpos=&amp;hvnetw=g&amp;hvrnd=9788360147060733018&amp;hvpone=&amp;hvptwo=&amp;hvqmt=&amp;hvdvc=c&amp;hvdvcmld=&amp;hvllocint=&amp;hvllocphy=1027744&amp;hvtargid=pla-909584486330&amp;ref=&amp;adgrpid=96943124074&amp;th=1</a>  <a href="https://www.amazon.com/gp/product/B07KJ96M2W/ref=ppx_yo_dt_b_search_asin_title?ie=UTF8&amp;th=1">https://www.amazon.com/gp/product/B07KJ96M2W/ref=ppx_yo_dt_b_search_asin_title?ie=UTF8&amp;th=1</a>	\$9.99  \$5.99
	3 Pcs AC 125V US Outlet	This is required for the internal 110 AC power outlets for devices like the Echo Dot. The external outlet is supplied.		<a href="https://www.amazon.com/gp/product/B07SDG8GH5/ref=ppx_yo_dt_b_search_asin_title?ie=UTF8&amp;th=1">https://www.amazon.com/gp/product/B07SDG8GH5/ref=ppx_yo_dt_b_search_asin_title?ie=UTF8&amp;th=1</a>	\$8.99

# Albatross System

## Tested Suggested Accessory Products

Item	Project Part Name	Description	Buy QTY	Suggested Product Link with Picture	Approx Price
1	Echo Dot (3rd Gen, 2018 release) - Smart speaker	Echo Dots attached to Donuts allow a full intercom and music system in a home. They can be paired together to play music throughout a home. It works with and controls Blink Cameras. Mount required to mount to Donut arm.		<a href="https://www.amazon.com/dp/B07FZ8S74R?psc=1&amp;ref=ppx_yo2_dt_b_product_details">https://www.amazon.com/dp/B07FZ8S74R?psc=1&amp;ref=ppx_yo2_dt_b_product_details</a> <a href="https://www.amazon.com/dp/B08ZSLPGLT?ref=ppx_yo2_dt_b_product_details&amp;th=1">https://www.amazon.com/dp/B08ZSLPGLT?ref=ppx_yo2_dt_b_product_details&amp;th=1</a>	\$40
2	Blink Mini – Compact indoor plug-in smart security camera	The Amazon “Blink Mini” is a low cost but works in the dark. Three cameras can be purchased for \$55. Installing 3 on the Donut gives security the high-ground. Thus a inexpensive security solution for homes. Not needed are window sensors and other security at ground level/inferior locations.		<a href="https://www.amazon.com/dp/B07X6C9RMF?psc=1&amp;ref=ppx_yo2_dt_b_product_details">https://www.amazon.com/dp/B07X6C9RMF?psc=1&amp;ref=ppx_yo2_dt_b_product_details</a>	\$24
3	YGCL Motion Sensor Night Light USB Rechargeable Wall Light Stick- Anywhere LED Night Light for Hallway	The YGCL camera is unique in that it functions while being charged/having constant power. It easily attaches to the mounting arms and it swivels so it can be aimed. Many DC lights on the market the auto-sense feature does not work while charging. It has a built-in battery and will function for days with limited use.		<a href="https://www.amazon.com/dp/B09CD4BVQG?psc=1&amp;ref=ppx_yo2_dt_b_product_details">https://www.amazon.com/dp/B09CD4BVQG?psc=1&amp;ref=ppx_yo2_dt_b_product_details</a>	\$22.99
4	Star Projector, Night Light Galaxy Projector with Alexa Voice Control	Putting a star projector on a table is fun for kids, however, it does not make the room dance-able! Mounting one to the Donut turns a room into a <b>“Dance Floor”</b> . <b>It pivots so it can be aimed.</b>		<a href="https://www.amazon.com/dp/B09DSDG21H?psc=1&amp;ref=ppx_yo2_dt_b_product_details">https://www.amazon.com/dp/B09DSDG21H?psc=1&amp;ref=ppx_yo2_dt_b_product_details</a>	\$35
5	SONOFF Micro USB Smart WiFi Adaptor Pack of 2.	Allows remote on/off power control for USB devices. Works with Alexa.		<a href="https://www.amazon.com/Adaptor-Devices-Compatible-Assistant-Required/dp/B087LTP9KN">https://www.amazon.com/Adaptor-Devices-Compatible-Assistant-Required/dp/B087LTP9KN</a>	\$19.90
6	CAMVATE 1/4"-20 Mini Ball Head (2 Pieces)	Some product do not pivot so they can be aimed. Adding these allows mounting arms to swivel in most directions.		<a href="https://www.amazon.com/dp/B07D9JCP18?psc=1&amp;ref=ppx_yo2_dt_b_product_details">https://www.amazon.com/dp/B07D9JCP18?psc=1&amp;ref=ppx_yo2_dt_b_product_details</a>	\$7.90
7	Drill America 1/4"-20 UNC High Speed Steel Tap Set	Tap set to add additional mounting arms.		<a href="https://www.amazon.com/dp/B00FXJVFLQ?psc=1&amp;ref=ppx_yo2_dt_b_product_details">https://www.amazon.com/dp/B00FXJVFLQ?psc=1&amp;ref=ppx_yo2_dt_b_product_details</a>	\$9.33
8	Voltaic Systems V25 6,400mAh USB Always On Battery Backup Power Bank	Always on Power Packs are required for devices that have their own internal batteries. This prevents the power pack from falling to sleep once the device is fully charged. Once asleep power packs will not wake up and charge devices when a recharge is required.		<a href="https://www.amazon.com/gp/product/B07ZS3WYZY/ref=ppx_yo2_dt_b_search_asin_title?ie=UTF8&amp;th=1">https://www.amazon.com/gp/product/B07ZS3WYZY/ref=ppx_yo2_dt_b_search_asin_title?ie=UTF8&amp;th=1</a>	\$39 Or \$69
9	Fan to direct air to the back of your neck while cooking. 2 <sup>nd</sup> fan to redirect air out a window.	The Genesis 6 Fan can be mounted to a mounting arm. Mount to a kitchen unit, and have cool air blown down at your neck while cooking.  The “Hot Shoe Mount Adapter” should be used mounting a heavy device like a 1 and ½ pound fan.		<a href="https://www.amazon.com/gp/product/B01559O0WY/ref=ppx_yo2_dt_b_asin_title_o02_s00?ie=UTF8&amp;psc=1">https://www.amazon.com/gp/product/B01559O0WY/ref=ppx_yo2_dt_b_asin_title_o02_s00?ie=UTF8&amp;psc=1</a>  <a href="https://www.amazon.com/gp/product/B07KPYSSKD/ref=ppx_yo2_dt_b_asin_title_o00_s00?ie=UTF8&amp;psc=1">https://www.amazon.com/gp/product/B07KPYSSKD/ref=ppx_yo2_dt_b_asin_title_o00_s00?ie=UTF8&amp;psc=1</a>	\$14.96  \$8.90

# Albatross System

## Accessory Products

Item	Project Part Name	Description	Buy QTY	Suggested Product Link with Picture	Approx Price
1	<p><b>“Hardwired Smoke Alarm for homes” that do not have dedicated smoke alarm electrical boxes.</b></p> <p>Any hardwired model, Nest, Kidd, First Alert, etc..</p>	<p>Each module internally, has a 110 AC power outlet. Thus a standard hardwired smoke alarm can be connected to it. The wiring is approx 5 inches long for a hardwired smoke alarm. Four inches are needed. Check wiring length when purchasing. Mounts to bottom of mounting arm. <b>(Battery only smoke alarms cause thousands of child deaths each year.)</b></p>		<p><a href="https://store.google.com/us/product/nest_protect_2nd_gen_specs?hl=en-US">https://store.google.com/us/product/nest_protect_2nd_gen_specs?hl=en-US</a></p> <p><a href="https://www.amazon.com/dp/B00PC5S0PA/ref=as_li_ss_tl?SubscriptionId=AKIAJO7E5OLQ67NVPFZA&amp;ascsubtag=361200476-2-910302457.1644242811&amp;tag=shopperz_origin1-20">https://www.amazon.com/dp/B00PC5S0PA/ref=as_li_ss_tl?SubscriptionId=AKIAJO7E5OLQ67NVPFZA&amp;ascsubtag=361200476-2-910302457.1644242811&amp;tag=shopperz_origin1-20</a></p> <p><a href="https://www.amazon.com/dp/B000MXJ498/ref=as_li_ss_tl?SubscriptionId=AKIAJO7E5OLQ67NVPFZA&amp;ascsubtag=386924147-2-910302457.1644242811&amp;tag=shopperz_origin1-20">https://www.amazon.com/dp/B000MXJ498/ref=as_li_ss_tl?SubscriptionId=AKIAJO7E5OLQ67NVPFZA&amp;ascsubtag=386924147-2-910302457.1644242811&amp;tag=shopperz_origin1-20</a></p> <p><a href="https://drive.google.com/file/d/1N2unvn9GzRVtUr1k_WfUo-iD0yDljkH/view?usp=sharing">https://drive.google.com/file/d/1N2unvn9GzRVtUr1k_WfUo-iD0yDljkH/view?usp=sharing</a></p>	\$20 to \$120
2	Duttek USB Gooseneck Cable	This is an optional mounting system where the mounting arms do not need to be used. Good only for extremely light devices. When used, suggested that the exact angle be found/adjusted. Then remove and paint arm with clear Super Glue. Repeat applications.		<a href="https://www.amazon.com/Duttek-Female-Flexible-Extension-Gooseneck/dp/B06XCKHWMF/ref=dp_prsubs_1?pd_rd_i=B06XCKHWMF&amp;pvc=1">https://www.amazon.com/Duttek-Female-Flexible-Extension-Gooseneck/dp/B06XCKHWMF/ref=dp_prsubs_1?pd_rd_i=B06XCKHWMF&amp;pvc=1</a>	\$7.50
3	<b>Bluetooth and TCP/IP Ceiling Speakers.</b>	Any speaker that is able to be remotely controlled can be used. The mounting arms can mount a speaker that is a 5 inch oval or smaller. Virtually any speaker can be used. If heavy, or greater than 5 inches, will need to be mounted to ceiling. AC or DC power available. Using a Goose-neck USB cable a consideration.		<p><a href="https://www.amazon.com/gp/product/B07P6T8J87/ref=ppx_yo_dt_b_search_asin_title?ie=UTF8&amp;pvc=1">https://www.amazon.com/gp/product/B07P6T8J87/ref=ppx_yo_dt_b_search_asin_title?ie=UTF8&amp;pvc=1</a></p> <p><a href="https://www.amazon.com/gp/product/B07FZ8S74R/ref=ppx_yo_dt_b_search_asin_title?ie=UTF8&amp;pvc=1">https://www.amazon.com/gp/product/B07FZ8S74R/ref=ppx_yo_dt_b_search_asin_title?ie=UTF8&amp;pvc=1</a></p>	\$35 to 100's
4	15A Weatherproof Outdoor Power Outlet Water Proof for Bathroom Shower Recycling Systems	For customers who purchase the Bathroom Water Recycling System Module, this is the tested outlet. It fits into the 3 inch hole. It is made to work in a marine wet environment. A similar male adapter can be plugged in and sealed. Thus corrosion free in a shower environment		<a href="https://www.amazon.com/gp/product/B07XF5D8HK/ref=ppx_yo_dt_b_search_asin_title?ie=UTF8&amp;th=1">https://www.amazon.com/gp/product/B07XF5D8HK/ref=ppx_yo_dt_b_search_asin_title?ie=UTF8&amp;th=1</a>	\$25
5	Kitchen Ceiling Mounted Projector TV	<p>Kitchens are a messy place to have a TV on a counter. Plus the safety of having an electrical wire close to preparation areas. Some Kitchens also suffer from the lack of a abundant preparation areas for appliances. With a kitchen projector TV it can be aimed at any available wall with a 20 by 16 open area.</p> <p>The projector in the links been tested and works very well</p>		<a href="https://www.amazon.com/gp/product/B08T647MBT/ref=ppx_yo_dt_b_search_asin_title?ie=UTF8&amp;pvc=1https://drive.google.com/file/d/1NQTqXL-o4GEZgleWslpeLLvKmhXaWIWY/view?usp=sharing">https://www.amazon.com/gp/product/B08T647MBT/ref=ppx_yo_dt_b_search_asin_title?ie=UTF8&amp;pvc=1https://drive.google.com/file/d/1NQTqXL-o4GEZgleWslpeLLvKmhXaWIWY/view?usp=sharing</a>	\$109.99
6	Kitchen and Night Sleeping Fan	Mounted on a Kitchen or Bedroom Donut, cool air can be aimed by the adjustable fan arms to blow down on the back of your neck or face while cooking or sleeping. Fan video below.		<p><a href="https://www.amazon.com/gp/product/B01559O0WY/ref=ppx_yo_dt_b_asin_title_o04_s00?ie=UTF8&amp;pvc=1">https://www.amazon.com/gp/product/B01559O0WY/ref=ppx_yo_dt_b_asin_title_o04_s00?ie=UTF8&amp;pvc=1</a></p> <p><a href="https://www.amazon.com/gp/product/B07KPYSSKD/ref=ppx_yo_dt_b_asin_title_o02_s00?ie=UTF8&amp;pvc=1">https://www.amazon.com/gp/product/B07KPYSSKD/ref=ppx_yo_dt_b_asin_title_o02_s00?ie=UTF8&amp;pvc=1</a></p> <p><a href="https://drive.google.com/file/d/1QFSLDVZgUdl-xhCLzAX80r6ZTTRs6rRz/view?usp=sharing">https://drive.google.com/file/d/1QFSLDVZgUdl-xhCLzAX80r6ZTTRs6rRz/view?usp=sharing</a></p>	<p>\$14.96</p> <p>\$8.90</p>

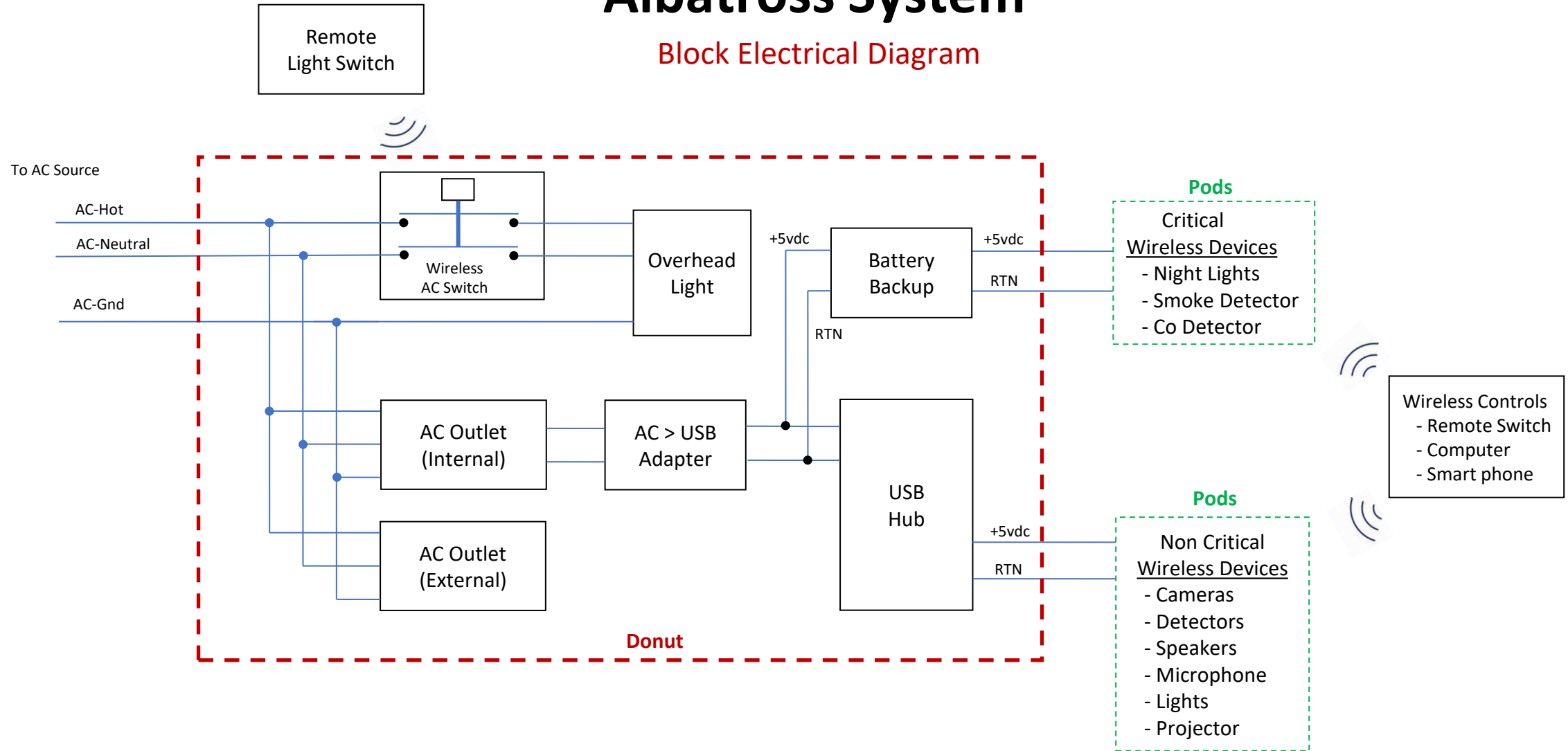
# Albatross System

Accessory Products					
Item	Project Part Name	Description	Buy QTY	Suggested Product Link with Picture	Approx Price
7					
8					
9					
10					
11					



# Albatross System

## Block Electrical Diagram

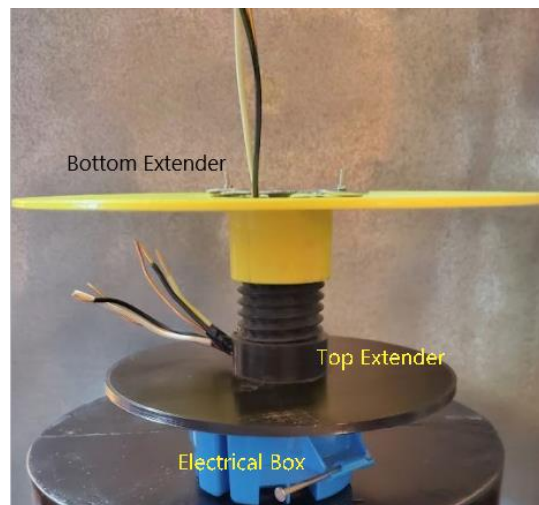


# Albatross System

## Installation Videos to Watch First

### Videos to view before starting installation Steps:

- Below is a link to a video showing a fully assembled unit/Donut. This is a complete unit ready for installation. <https://drive.google.com/file/d/1O9uam2k-93ZODZTE8EHWORdKUHDbJbUl/view?usp=sharing>
- Below is a video showing the correct installation of the wireless light switch. The base that light attaches to has been removed. <https://drive.google.com/file/d/1OLjZZKkQtKjLk-FQyxumfUKXGq1OPGQc/view?usp=sharing>
- Below is a video that shows the correct internal **electrical wiring of all the modules**. <https://drive.google.com/file/d/1OTPLjYE9YsuT4iTaD8pnEvOgSp2VOR8/view?usp=sharing>
- Below is a video that explains the two versions to power the four external USB ports. [https://drive.google.com/file/d/1OT4CjaueXdCWRRsa\\_leqGTWj04A4nvsx/view?usp=sharing](https://drive.google.com/file/d/1OT4CjaueXdCWRRsa_leqGTWj04A4nvsx/view?usp=sharing)
- Below are two links that explain how to separate the base extender from the shell. [https://drive.google.com/file/d/1OU\\_YnP1wI9Gkb\\_gLrIRPo6UyoiePqL9X/view?usp=sharing](https://drive.google.com/file/d/1OU_YnP1wI9Gkb_gLrIRPo6UyoiePqL9X/view?usp=sharing)  
[https://drive.google.com/file/d/1OVIA6DbDofx9JfR9AWpgXKdYiD\\_FpVMU/view?usp=sharing](https://drive.google.com/file/d/1OVIA6DbDofx9JfR9AWpgXKdYiD_FpVMU/view?usp=sharing)





# Albatross System

## Installation Instructions

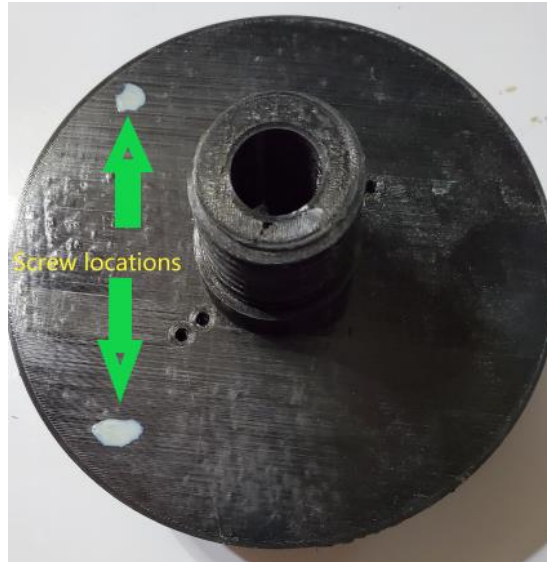
**These instruction steps are meant for a individuals experienced with electrical wiring.  
The steps highlight it is a simple and quick process, to install the ceiling light base adapter, resulting in lower bids.**

1. After the ceiling light has been removed, along with the light's steel plate mounted to the electrical box, wire the base extender bottom wires, to the ground, neutral/white, and hot/black wires, to the matching colored ceiling electrical box wires.
2. Take the removed ceiling light electrical steel bar/plate and attach it to the Top Extender. (Screws needed are attached to the Top Extender.)
3. Attach the Base/Bottom Extender to the electrical box using the bolts removed taking off the light's steel plate.
4. Using 2 inch Sheetrock screws, screw through the Base Extender into the ceiling rafter to the left or right of the electrical box.
5. With the light red colored wires coming out the top, and the black and red wires coming out the side, install/slide the shell onto the bottom extender.
6. Reconnect electrical wires inside the shell as specified in the video "[electrical wiring of all the modules](#)"
7. Put electrical tape on all tightened wire nuts. Put wire nuts on hot/neutral wires that will attach to the light for safety.
8. Turn on the circuit breaker to the light.
9. At the same time, push the synchronize button on the wireless light switch controller in the shell and the on wireless switch button. This pairs the two together.
10. Turn off the circuit breaker and attach the ceiling light temporarily. Turn on breaker, and verify the wireless switch is turning on and off the light. Using your phone charger, connect to each of the four external USB ports, verify that all four ports can charge your phone.
11. Turn off circuit breaker and screw on the top extender onto the base/bottom extender. This will hold the shell tightly to the ceiling.
12. Install the existing ceiling light. If it has a diameter greater than 11 inches, consider purchasing a new light.

**Warning: Working with AC wiring can be extremely dangerous. To avoid the risk of injury or death from electrical shock, use a licensed electrician to connect all AC power lines and certify the safety of the Albatross System after installation.**

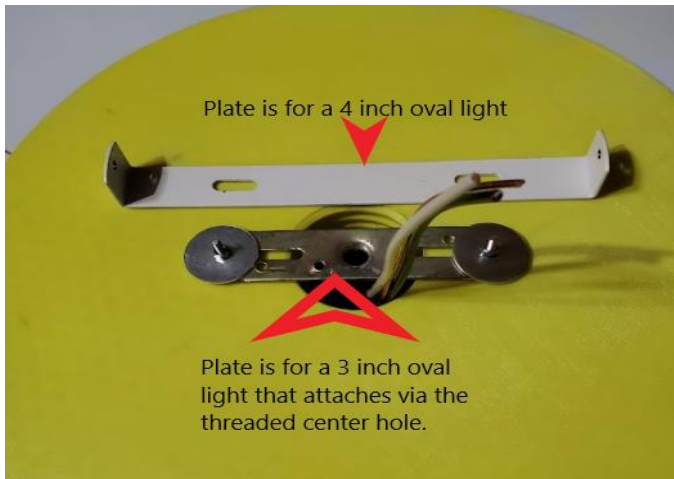
# Albatross System

## Bottom Extender Attaches to Electrical Box



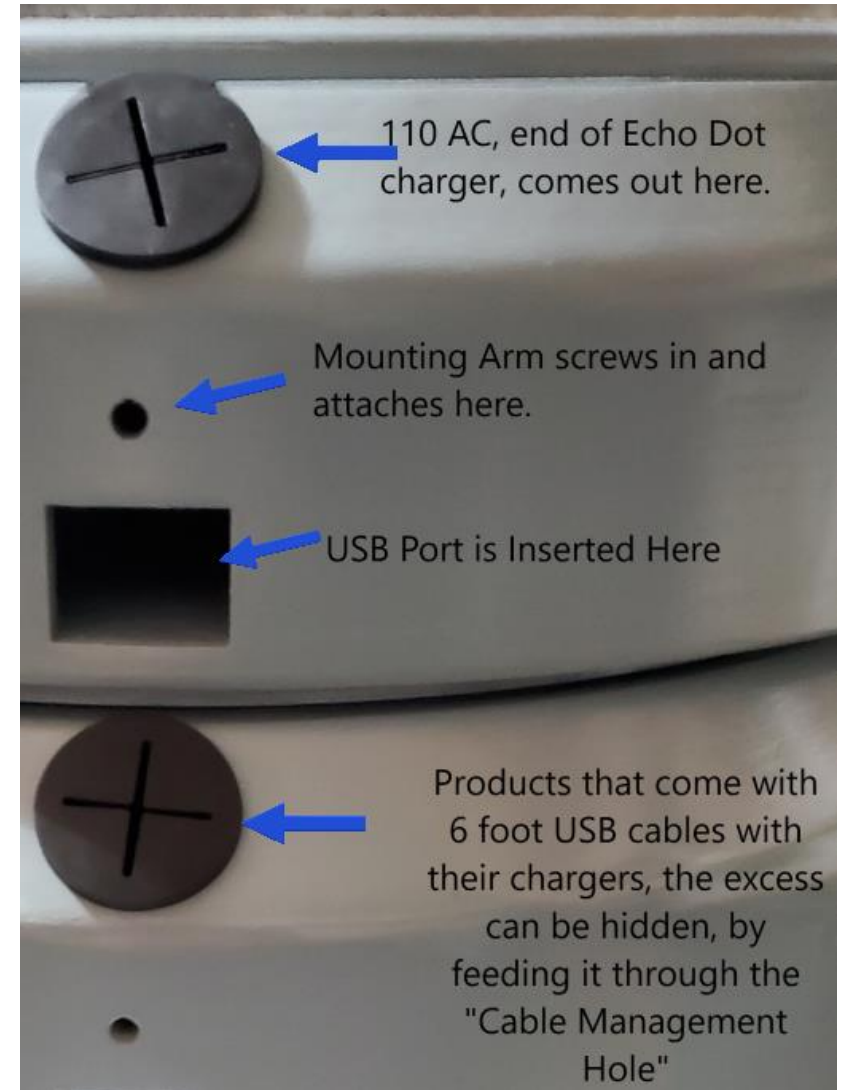
The white holes in picture, are the correct placement to anchor the base/bottom extender to a ceiling joist. (Using 2 inch "Tapered" screws.) Tapered so flush and does not catch the bottom of the shell when installed.

## Top Extender Ceiling Light attaches to it.



Different ceiling lights have unique mounting plates. In the picture to the left are two such examples.

To use your existing light, attach it to the top extender as shown in Picture. If you purchase a new light, use the plate that comes with it.



# Albatross System

The MWD Module is used when a Genii Donut is installed in bathrooms. It replaces the the power module used in living areas where being waterproof is not a concern. It is specific to bathrooms because the power outlet is extremely water resistant. Thus a means to safely provide power to shower recycling systems mounted above shower heads.

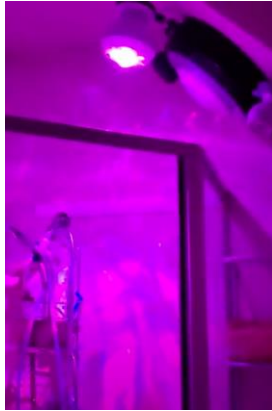
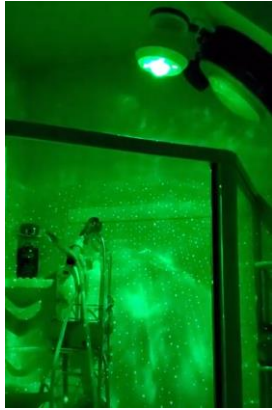
[Shower Video.mp4](#)

Power to the recycling device will be provided via a light-on-a-chain, to the ceiling, directly above above the shower head.

Installers can safely take power from the light, hidden cosmetically behind a thin strip, to power a shower recycling system a foot below.

There are lots of “Shower Recycling Systems that require a bathroom remodel that cost in the neighborhood of \$10,000 or more. The MWD module is an affordable solution that does not need a bathroom remodel. Thus, it is economically in reach, for most homes.

**Warning: Working with AC wiring can be extremely dangerous. To avoid the risk of injury or death from electrical shock, use a licensed electrician to connect all AC power lines and certify the safety of the MWD system after installation.**



An Albatross installed in bathrooms, allows for music to be played (Echo Dot). And maybe a laser light creating a warm atmosphere for couples.

